

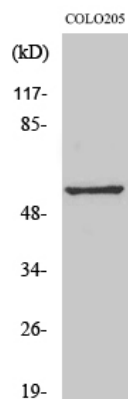


GPR176 Polyclonal Antibody

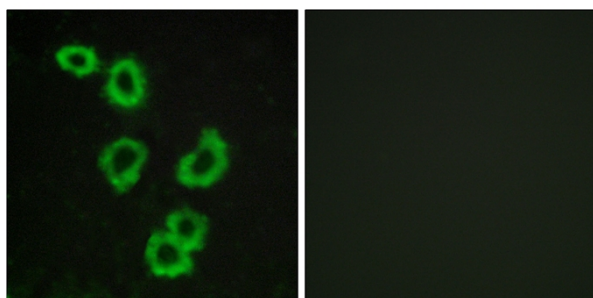
Catalog No	YP-Ab-13322
Isotype	IgG
Reactivity	Human;Mouse;Rat
Applications	WB;IF;ELISA
Gene Name	GPR176
Protein Name	Probable G-protein coupled receptor 176
Immunogen	The antiserum was produced against synthesized peptide derived from human GPR176. AA range:466-515
Specificity	GPR176 Polyclonal Antibody detects endogenous levels of GPR176 protein.
Formulation	Liquid in PBS containing 50% glycerol, 0.5% BSA and 0.02% sodium azide.
Source	Polyclonal, Rabbit,IgG
Purification	The antibody was affinity-purified from rabbit antiserum by affinity-chromatography using epitope-specific immunogen.
Dilution	Western Blot: 1/500 - 1/2000. Immunofluorescence: 1/200 - 1/1000. ELISA: 1/10000. Not yet tested in other applications.
Concentration	1 mg/ml
Purity	≥90%
Storage Stability	-20°C/1 year
Synonyms	GPR176; Probable G-protein coupled receptor 176; HB-954
Observed Band	57kD
Cell Pathway	Cell membrane ; Multi-pass membrane protein .
Tissue Specificity	Fetal brain,Ovary,
Function	function:Orphan receptor.,similarity:Belongs to the G-protein coupled receptor 1 family.,
Background	Members of the G protein-coupled receptor family, such as GPR176, are cell surface receptors involved in responses to hormones, growth factors, and neurotransmitters (Hata et al., 1995 [PubMed 7893747]).[supplied by OMIM, Jul 2008],
matters needing attention	Avoid repeated freezing and thawing!
Usage suggestions	This product can be used in immunological reaction related experiments. For more information, please consult technical personnel.



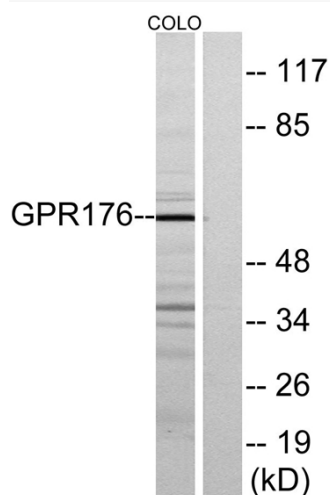
Products Images



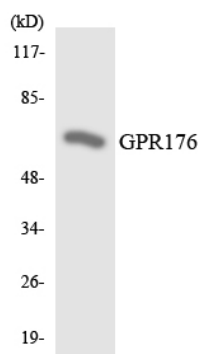
Western Blot analysis of various cells using GPR176 Polyclonal Antibody



Immunofluorescence analysis of MCF7 cells, using GPR176 Antibody. The picture on the right is blocked with the synthesized peptide.



Western blot analysis of lysates from COLO205 cells, using GPR176 Antibody. The lane on the right is blocked with the synthesized peptide.



Western blot analysis of the lysates from HeLa cells using GPR176 antibody.